

CROMPTON INSTRUMENTS DIN IP65 ENCLOSURE



**PROTECTION AGAINST:
DUST INGRESS (DUST-TIGHT)
LOW-PRESSURE WATER JETS FROM ANY
DIRECTION**

KEY FEATURES

- IP65 Protection
- Hinged Transparent Cover
- Secure Snap-Fit Design
- Dual Sealing System
- Tamper-Resistant Provision
- Compact Low-Profile Construction

The Crompton Instruments IP65 Protection Kit is designed to enhance the environmental protection of DIN panel meters in demanding installations.

Suitable for 96 x 96 mm meter formats, the kit provides a robust front-panel sealing solution to safeguard instruments against dust, moisture, and water ingress.

The assembly comprises a precision-moulded enclosure, transparent hinged window, silicone O-ring, and EPDM gasket, working together to maintain ingress protection while allowing convenient access for operation and maintenance. Its compact, low-profile design ensures minimal protrusion from the panel, delivering both functional protection and a clean, professional finish.

APPLICATIONS

- Industrial control panels
- Outdoor electrical installations
- Switchgear and distribution boards
- Energy monitoring and metering systems
- Harsh or washdown environments
- Renewable energy systems (solar / wind installations)

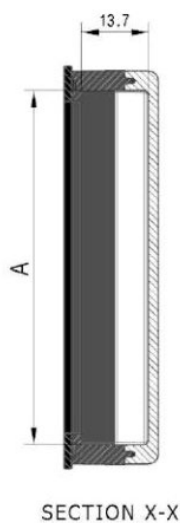
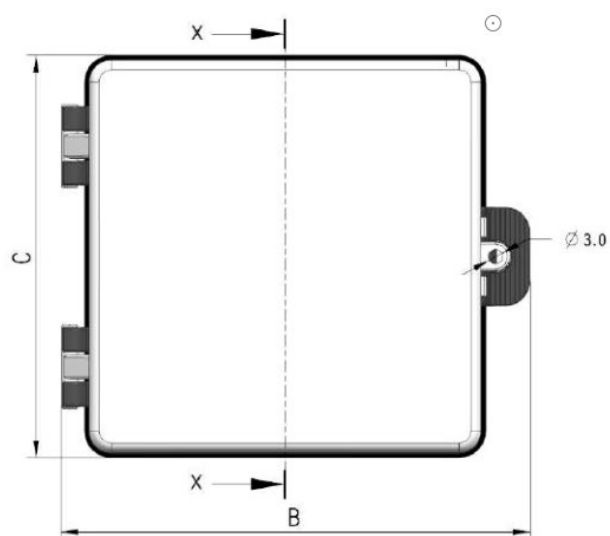
ORDERING INFORMATION

Model	Part number
DIN 96 IP65 PROTECTION ENCLOSURE	DGU-IP65-KIT

DIMENSIONAL INFORMATION



DIMENSION A	96.2mm
DIMENSION B	119.7mm
DIMENSION C	106.0mm



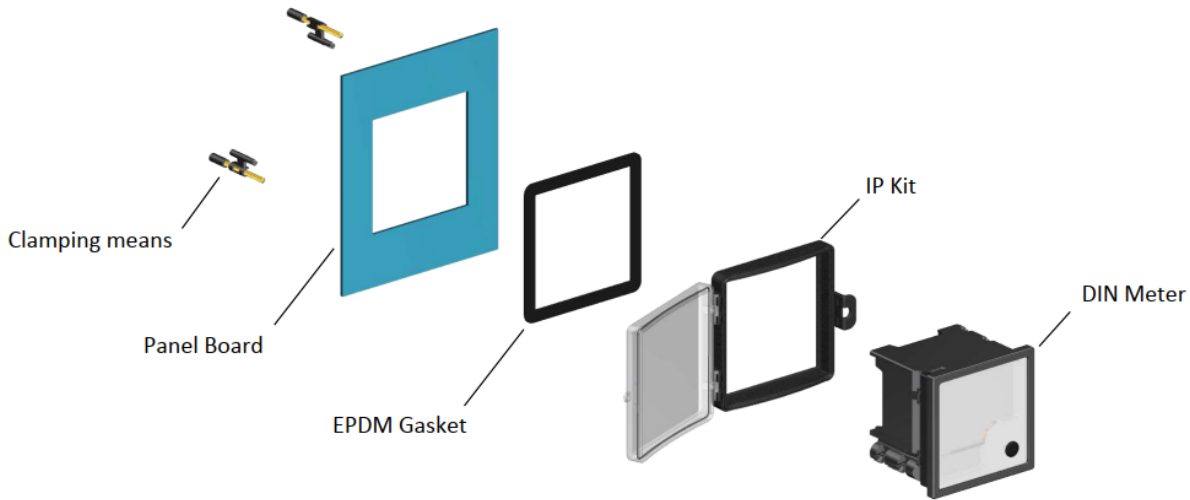
IP Rating:

The IP Kit provides IP 65 rating from front of the panel for meter as well as between panel and meter provided EPDM gasket and Silicon sponge O-ring is provided along with the kit. If gasket and O-ring is absent then it will provide only IP 54 rating.

ASSEMBLY INSTRUCTIONS

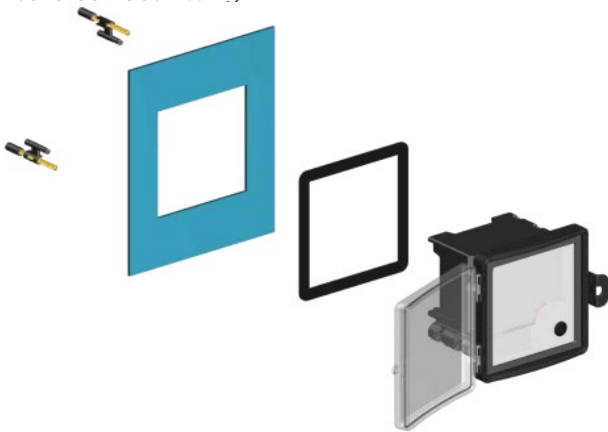
STEP 1:

Collect DIN Meter, Pre- assembled IP Kit with Gasket & Clamping means



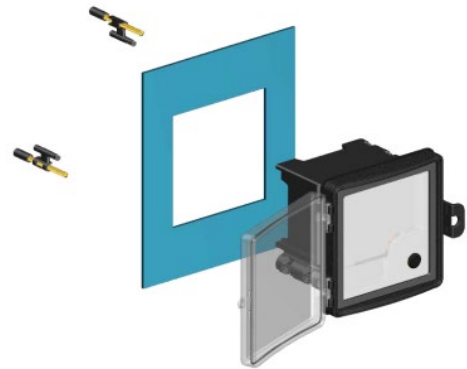
STEP 2:

Insert the DIN Meter in the IP Kit's Black Base and ensure correct fitting



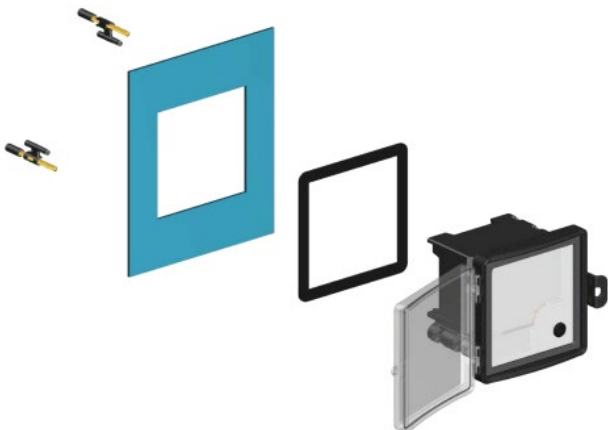
STEP 3:

Insert the DIN Meter with IP Kit in the EPDM gasket and confirm its symmetric position with meter.



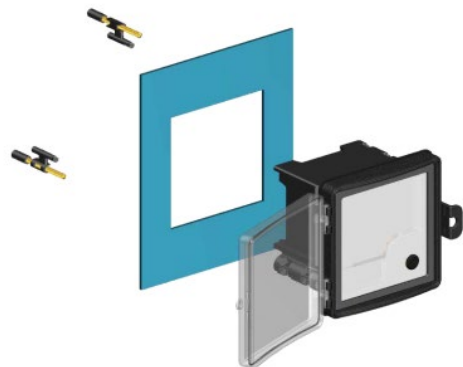
STEP 4:

Place the DIN Meter in the cut-out provided on the panel along with the IP kit & gasket



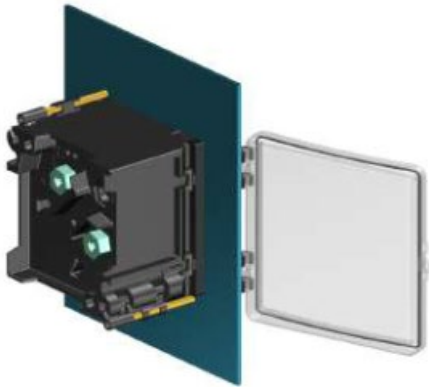
STEP 5:

At the back of panel hold the clamping means for next step.



STEP 6:

Using the clamping means provided, clamp meter with panel firmly to ensure proper compression of gasket



STEP 7:

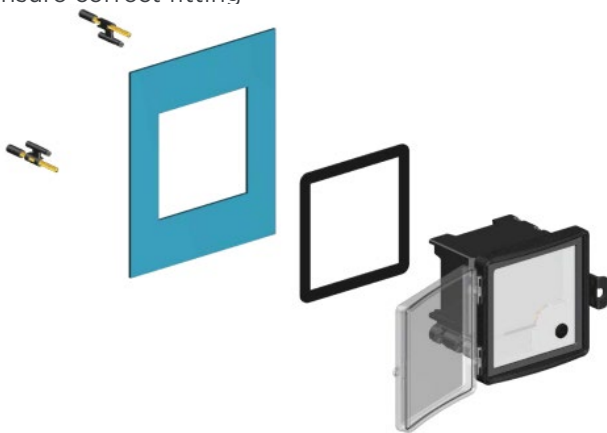
Close the window by pressing firmly with palm until a click is heard



OPENING THE WINDOW

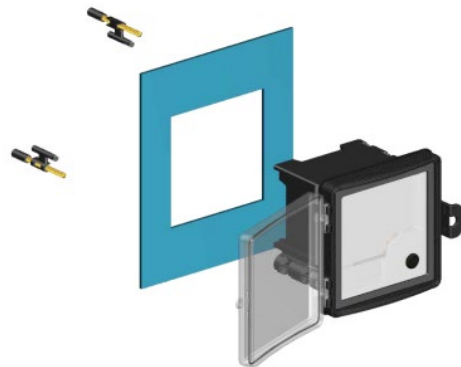
STEP 1:

Insert the DIN Meter in the IP Kit's Black Base and ensure correct fitting



STEP 2:

Insert the DIN Meter with IP Kit in the EPDM gasket and confirm its symmetric position with meter.



FOR MORE INFORMATION:

TE Technical Support Centres

Learn more: [TE.com/energy](https://www.te.com/energy)

© 2026 TE Connectivity. All Rights Reserved.

TE, TE Connectivity, TE connectivity (logo), EVERY CONNECTION COUNTS, are trademarks owned or licensed by TE Connectivity. Other logos, product and company names mentioned herein may be trademarks of their respective owners. While TE has made every reasonable effort to ensure the accuracy of the information in this brochure, TE does not guarantee that it is error-free, nor does TE make any other representation, warranty or guarantee that the information is accurate, correct, reliable or current. TE reserves the right to make any adjustments to the information contained herein at any time without notice. TE Connectivity's obligations shall only be as set forth in TE Connectivity's Standard Terms and Conditions of Sale for this product and in no case will TE Connectivity be liable for any incidental, indirect or consequential damages arising out of the sale, resale, use or misuse of the product. TE expressly disclaims all implied warranties regarding the information contained herein, including, but not limited to, any implied warranties of merchantability or fitness for a particular purpose. The dimensions, specifications, and/or information contained herein are for reference purposes only and are subject to change without notice. Consult TE for the latest dimensions, specifications, and/or information. Users of TE Connectivity products should make their own evaluation to determine the suitability of each such product for the specific application.

Connect with us:
[TE.com/energy](https://www.te.com/energy)

