



TE DataX Energy Monitoring Application Software

In today's business environment energy expenses account for an increasing percentage of an organisation's operating costs. TE dataX software is an effective tool that extends the features of your existing metering portfolio and allows fact based decision making to formulate energy reduction plans.

TE dataX software is an application for data collection, storage, real time data analytics and reporting of metered energy data. This provides fast, reliable and accurate insights into your facility's energy consumption and enables to take proactive cost savings actions.

The software connects to Crompton Instrument digital metering systems via industry standard protocol and collects real time data into an integral database in intervals as short as 15 minutes. Users can analyse, graph and export interval data as well as register values, view power quality events or compare variation of electrical values. As the system collects and stores data, a historical profile is developed and an easy to use interface presents information in hourly, daily, monthly or annual formats. Generated reports enable to focus on abnormal energy consumption patterns, identify appropriate remedial actions and benefit from cost savings.

The system can be scaled to suit end user's needs, be it an entire site, a specific department, a particular process or a single machine. TE dataX can communicate and collect data from up to 32 meters within a facility.

TE dataX software is the first step in energy monitoring systems offered by TE Connectivity. Additional software applications offer advanced feature sets enabling a more focused analysis of the collected data further improving facility cost savings.

A licensed freeware application, TE dataX operates in Microsoft Windows environment and can be accessed and installed from www.crompton-instruments.com.

Features

- Collects electrical parameters in hourly, daily, monthly and annual formats
- Displays real time data from any meter
- Exports metering data for further analysis
- Operates with up to 32 meters

Benefits

- Improves metering assets utilisation
- Simple installation process
- Software available as freeware
- Turns metering into energy monitoring
- Enables organisations to understand their energy consumption

Key Characteristics of TE DataX Software

- Compatible with a wide variety of Crompton Instrument metering devices
- Local read via a RS-485 wired connection using the Modbus RTU Protocol.
- Connect with up to 32 digital metering devices on a multi drop RS485 wired bus.
- Can communicate with devices up to 1.2km away
- Instantaneous data display

Crompton Instruments offer a full range of meters, current transformers and communication devices.

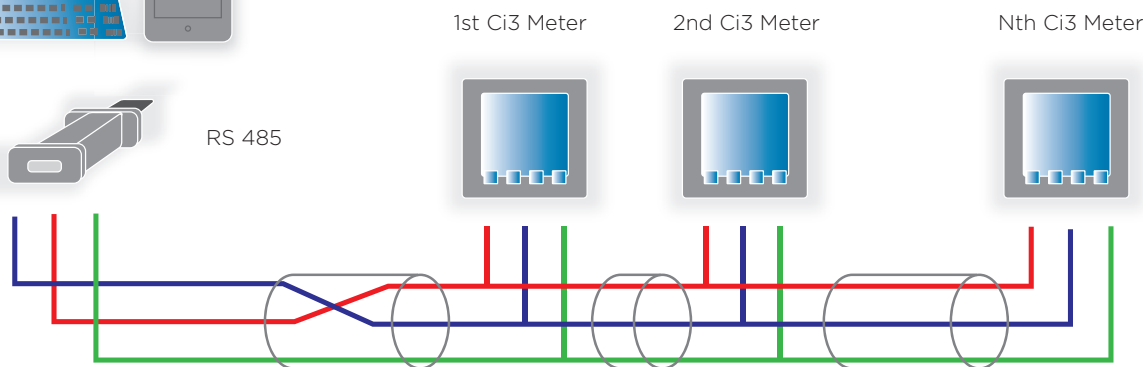
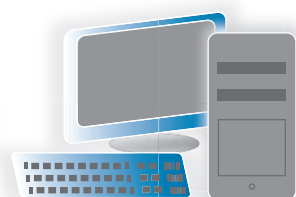


Integra Ci3 Digital Metering System

Enclosure	Enclosure style DIN 96 panel mount
Environment	Operating temperature -10°C to +55°C Storage temperature -20°C to +70°C
System configuration	1-phase 2-wire, 3-phase 3-wire, 3-phase 4-wire Nominal input voltage 100-289V AC L-N (173-500V AC L-L) Nominal input current 5A AC rms Frequency 45-66Hz
Accuracy	Active energy (kWh) Class 1 (IEC 62053-21) Reactive energy (kVarh) +/- 1% of range
Output modules	1 RS-485 communication module Type 2-wire half duplex Baud rate 2400, 4800, 9600, 19200, 38400



Typical system architecture



While TE has made every reasonable effort to ensure the accuracy of the information in this catalog, TE does not guarantee that it is error-free, nor does TE make any other representation, warranty or guarantee that the information is accurate, correct, reliable or current. TE reserves the right to make any adjustments to the information contained herein at any time without notice. TE expressly disclaims all implied warranties regarding the information contained herein, including, but not limited to, any implied warranties of merchantability or fitness for a particular purpose. The dimensions in this catalog are for reference purposes only and are subject to change without notice. Specifications are subject to change without notice. Consult TE for the latest dimensions and design specifications. TE connectivity (logo) and TE Connectivity are trademarks of the TE Connectivity Ltd. family of companies. Crompton is a trademark of Crompton Parkinson and is used by TE Connectivity Ltd. under a licence. Other logos, product and Company names mentioned herein may be trademarks of their respective owners.

TE Energy - innovative and economical solutions for the electrical power industry: cable accessories, connectors & fittings, insulators & insulation, surge arresters, switching equipment, street lighting, power measurement and control.

Tyco Electronics UK Ltd
TE Energy
Freebourns Road
Witham, Essex CM8 3AH

Phone: +44 (0)870 870 7500
Fax: +44 (0)870 240 5287
Email: freeware_support@te.com

www.crompton-instruments.com
<http://energy.te.com>

